

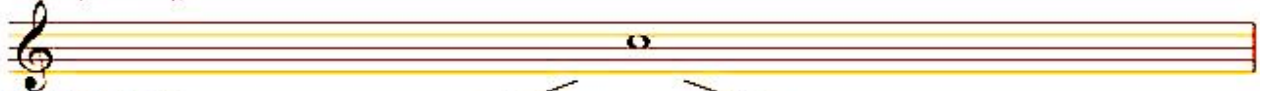
ATATÜRK SCHOOL – FUNDAMENTAL MUSIC TRAINING CHEAT SHEET

E F G A B C D E F G A B C D E F G A B C D E



Mi Fa Sol La Si Do Re Mi Fa Sol La Si Do Re Mi Fa Sol La Si Do Re Mi

Birlik Nota (4 Vuruş)



İkilik Nota (2 Vuruş)



Dörtlük Nota (1 Vuruş)



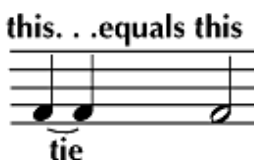
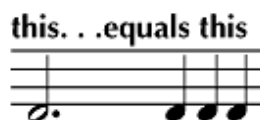
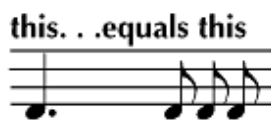
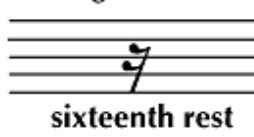
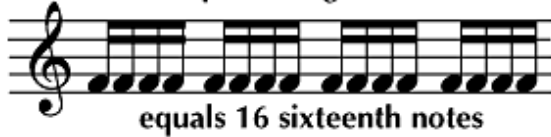
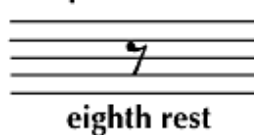
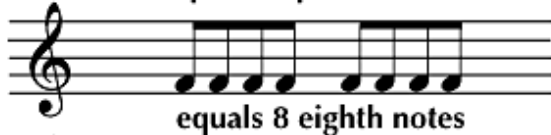
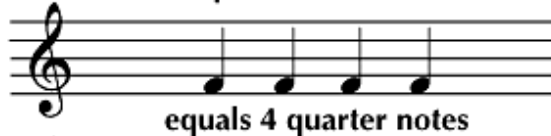
Sekizlik Nota (1/2 Vuruş)



Onaltılık Nota (1/4 Vuruş)



Otuzikilik Nota (1/8 Vuruş)



| Term | Translation |
|-------------|--------------------|
| grave | very, very slow |
| largo | very slow |
| lento | slow |
| adagio | slow |
| andante | slow walking speed |
| moderato | moderate (medium) |
| allegretto | rather fast |
| allegro | fast |
| vivace | lively |
| presto | very fast |
| ritardando | slow down |
| accelerando | speed up |

Whole Note = 4 beats

Dotted Half = 3 beats

Half Note = 2 beats

Quarter Note = 1 beat

Eighth Note = 1/2 beat

Sixteenth Note = 1/4 beat

ATATÜRK SCHOOL – FUNDAMENTAL MUSIC TRAINING CHEAT SHEET



Staff: 5 horizontal lines and 4 spaces



G Clef or Treble Clef



Measure: space between 2 adjacent bars



Letters of lines of Treble Clef



Letters of spaces of Treble Clef



F Clef or Bass Clef



Letters of lines of Bass Clef



Letters of spaces of Bass Clef



Double Bar: end of a section or piece



Repeat: a section to be repeated



Whole Note: longest note in use



Whole Rest: pause equal in value to whole note



Half Note: half the time of whole note



Half Rest: pause equal in time to half note



Quarter Note: one-quarter value of whole note



Dotted Quarter Note: dot increases length of note by one-half



Quarter Rest: pause equal to quarter note



Eight Note: one-eighth value of whole note



Eight Rest: pause equal to eighth note



Sixteenth Note: one-sixteenth value of whole note



Sixteenth Rest: pause equal to sixteenth note



Sharp: raises note one-half tone



Double Sharp: raises note one full tone



Natural: cancels effect of sharp or flat



Flat: lowers note one-half tone



Double Flat: lowers note one full tone



Hold duration of note or rest should be extended



Tie: to be played as one note



Triplet: played in time of two notes of same value



Slur: transition should be smooth



Staccato: distinct, disconnected



Legato: very smooth and connected



Accent: emphasize by stress or touch



Four-Four Time: four quarter notes to a measure



Common Time: same as four-four time



Six-Eight Time: six eighth notes to a measure



Piano: soft



Pianissimo: very soft



Mezzo-Piano: moderately soft



Forte: loud, powerful



Fortissimo: very loud



Mezzo-Forte: moderately loud



First Ending: repeat and take second ending

a tempo

In Time: return to regular tempo

rit.

Ritardando: gradually slower

D.C.

Da Capo: repeat from the beginning

al Fine

cresc.

Crescendo: increasing in loudness

dim.

Diminuendo: diminishing gradually in loudness

D.S.

Dal Segno: repeat from the sign :S:

al Fine



Grand Staff: Treble and Bass Clefs

